



Mukund Education Society's  
**SANMATI ENGINEERING COLLEGE**

Approvals/Affiliation  
A.I.C.T.E. New Delhi. D.T.E. Mumbai. Govt. of India.  
Sang Gadge Baba Amravati University (S.G.B.A.U)  
Amravati, Maharashtra, India.

Address  
N.H.161, Washim, Malegaon Road, Sawargaon  
Washim, Maharashtra, India - 444 505  
Email : engineering@sanmati.in

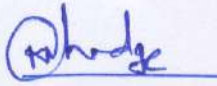
Engineering U.G. and P.G programmes  
Contact Details  
Phone : 855 184 1000, 855 284 1000  
Fax : 07252 234302  
website : www.sanmati.in

Ref. No.

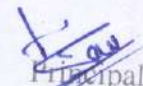
Date :

SEC/AQAR 2021-22/ Criteria Supporting Documents/Cr 4.1.1 Date:- 12/12/2022

Criteria 4.1.1	The Institution has adequate infrastructure and physical facilities for teaching learning. viz., classrooms, laboratories, computing equipment etc.
Supporting Documents:	1) Sample Photos are attached. (Appendix-I)

  
Cr-4 Coordinator

  
NAAC Coordinator

  
Principal  
Sanmati Engineering College  
Washim

**OUR INSTRUCTION**

• Sanmati Engineering College, Washim  
• Mohanlalji Walchale College, Washim

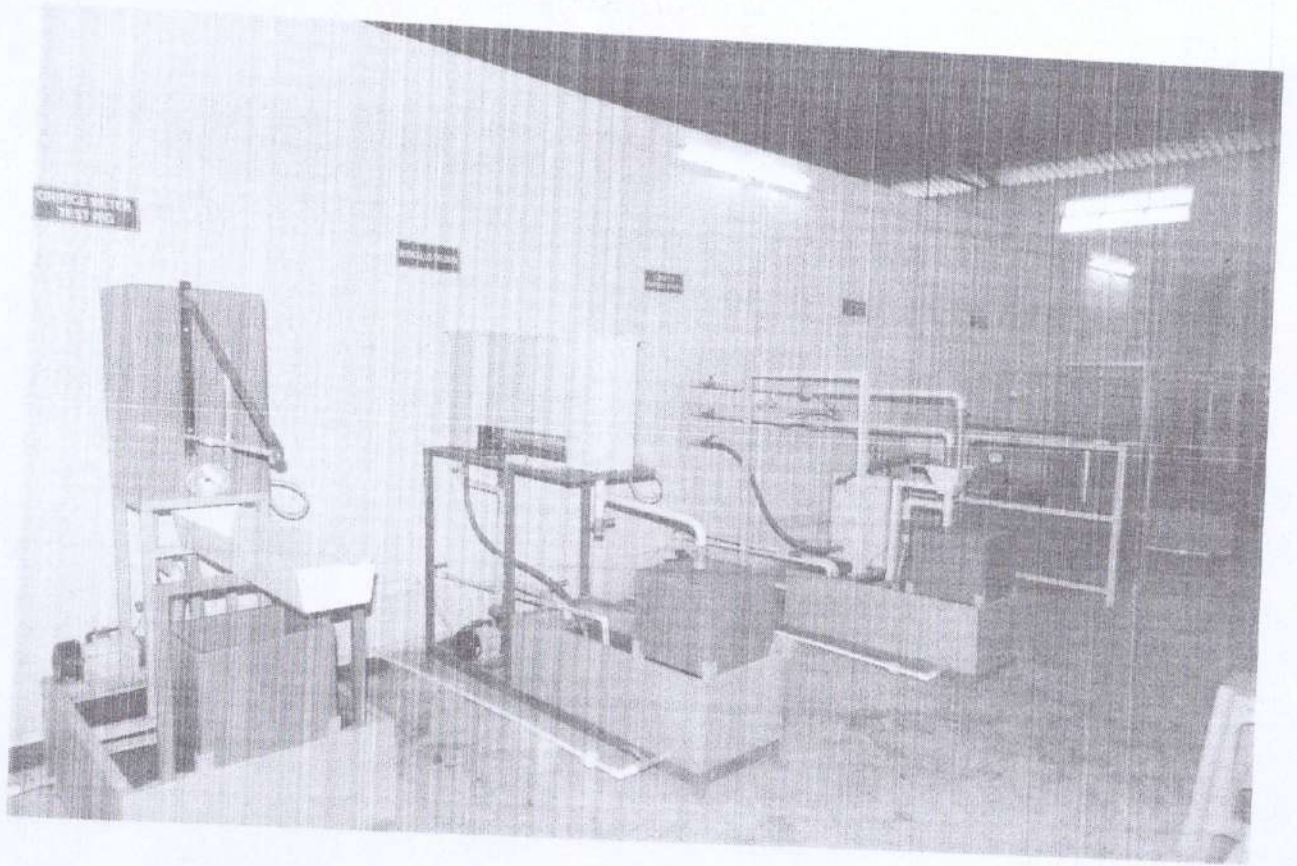
• Lt. Pandurang Patil Nursing College, Akola  
• Sanmati Public School, Washim

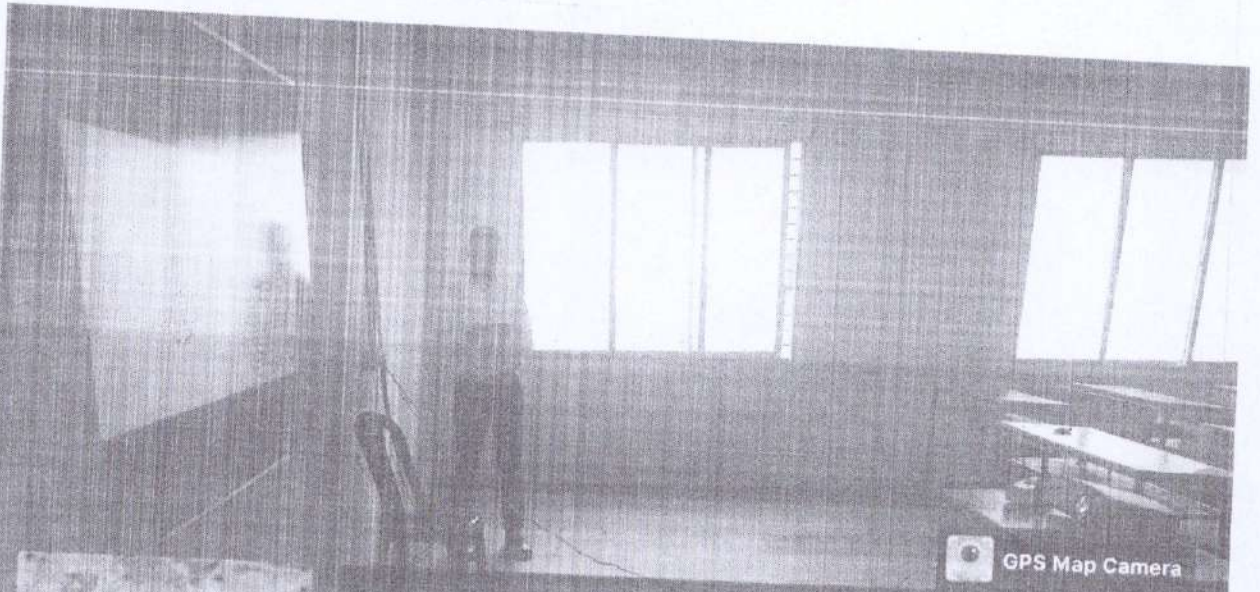
• Sanmati College of Education, Washim  
• Sanmati Law College, Washim

**PRESIDENT**  
SHRI MOHANLALJI JAIN  
**SECRETARY**  
ADV. VAISHALI WALCHALE

# Appendix-I







GPS Map Camera



Google

**Sawargaon Barde, Maharashtra, India**  
State Highway 204, Washim Malegaon Road,  
Sawargaon Barde, Maharashtra 444505, India  
Lat 20.180924°  
Long 77.057936°  
12/12/22 12:49 PM GMT +05:30



